

# Town of Lamartine

Fond du Lac County, Wisconsin

## Farmland Preservation Zoning Map

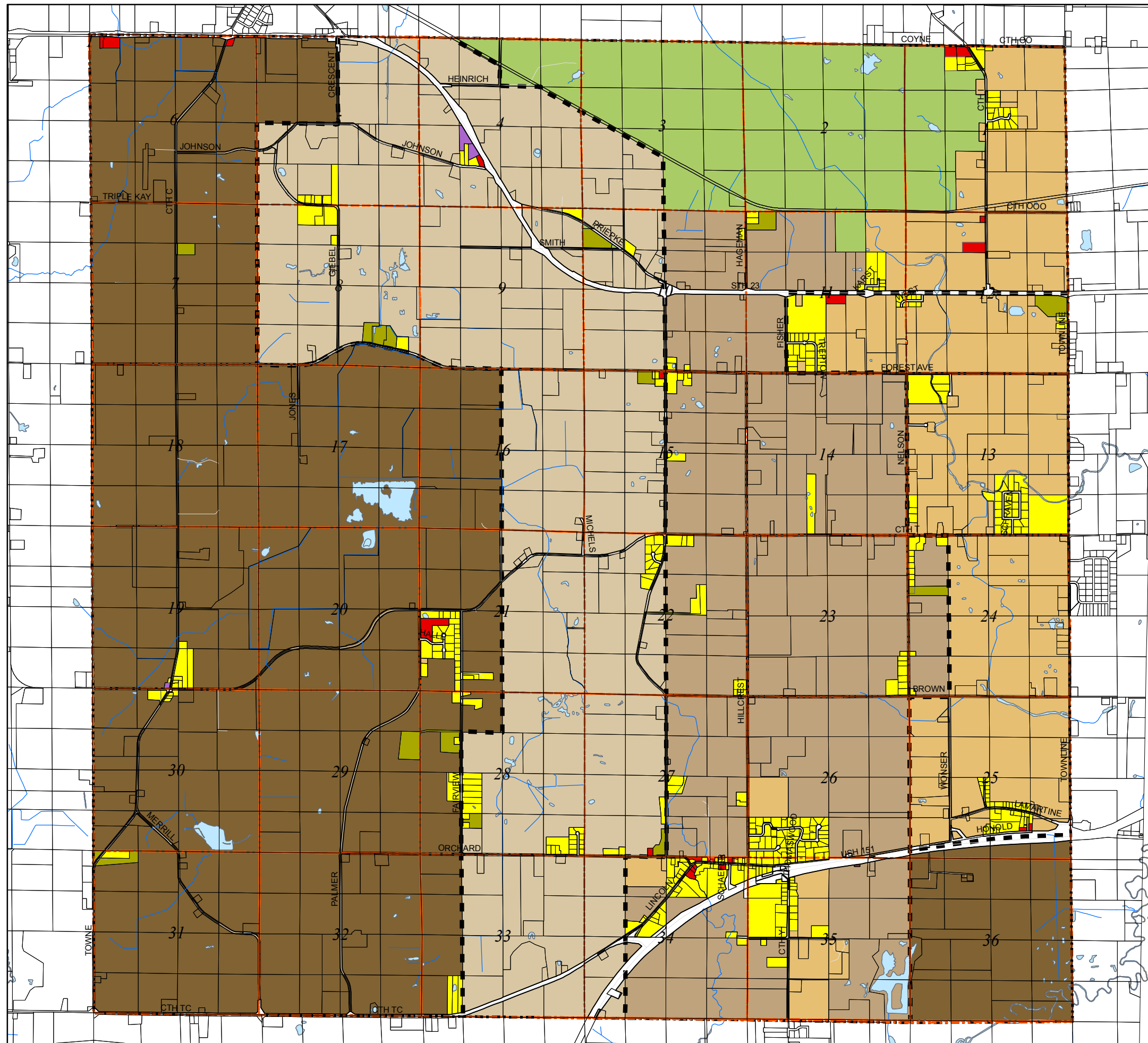
Final Submittal December 17, 2013  
 DATCP Certification December 23, 2013  
 Town Adoption March 26, 2014



Legend

### Zoning Districts

- Intensive Farmland Preservation (FP-I)
- Concentrated Farmland Preservation (FP-C)
- Moderate Farmland Preservation (FP-M)
- General Agricultural (AG)
- Conservancy (CON)
- Residential (R-1)
- Rural Residential (R-2)
- Business (BUS)
- Industrial (IND)
- Corporate Limits
- Section Line
- Parcel Boundaries
- Right of Way
- Farmland Preservation Boundary
- Waterways
- Open Water



The base map was created by the Fond du Lac County Planning Department who assumes no liability for the accuracy of this data or any use or misuse of its content are the responsibility of the user. Changes were made by Martenson and Eisele, Inc. under the direction of the Town of Lamartine.

### Martenson & Eisele, Inc.

1377 Midway Road  
 Menasha, WI 54952  
 www.martenson-eisele.com  
 info@martenson-eisele.com  
 920.731.0381 1.800.236.0381

Planning  
 Environmental  
 Surveying  
 Engineering  
 Architecture

arcgis10280001fp.mxd\_Adopted March 26, 2014